



# 84th Division Alumni Bugler

*Newsletter of the 84th Division Alumni Association*

December 2012



## Upcoming Special Events

10 Feb 2013	Valentine Dinner (Sunday)
04 May 2013	Dining In/Out (Saturday)
13 Jun 2013	Annual Meeting (Thursday)
06 Sep 2012	Fort McCoy Retiree Appreciation Day
14 Sep 2013	Steak Fry Cookout (Saturday)



## 84th Alumni Association Sunshine Activities

Individuals aware of any member or spouse who should receive a get well card or sympathy card, should call Jan Berzowski at 262/468-4928. Please remember to spell the individual's name and provide the address, if available, and give a brief description of the problem when leaving a message. This system works very well for the Alumni Association. To date, approximately fifty cards have been sent to members. Keep the calls coming.

## In Memoriam

**CSM Don Hendrickson 8/2012**

**Mrs. Helen Erffmeyer 8/12/2012**

**MG Joseph Scheinkoenig 9/5/2012**

**MG Robert M. Erffmeyer 9/20/2012**

COL (Ret) Bill Ridgely and Denise Mueller are on the mend and we wish them luck.



## 2012 September Steak Fry Cook Out

Our annual Steak Fry was held on 8 Sep 12, at the Stenz-Griesell-Smith American Legion Post 449 in Brookfield. As usual, there was plenty of food and good fellowship. This event is our fundraiser for the year, and we had a great silent auction and raffle. Next year we will hold the cook out one week later, to avoid conflict with Fort McCoy's RAD.

## INSIDE THIS ISSUE

**1 Special Events / Sunshine / USAR News**

**2-3 President's Comments**

**3 TRICARE News / 2012 Tax Issues / West Point News**

**4-6 Travel Adventures**

**6-7 Travel Specials & Traps**

**7 Tax Calculators / Army Suicides**

## Fort McCoy to get new 88<sup>th</sup> Commander

Army Reserve BG Karen E. LeDoux has been nominated for a second star and as commanding general of the 88<sup>th</sup> Regional Support Command, Fort McCoy, WI. BG LeDoux has most recently served as commanding general, Army Materiel Command-Southwest Asia/G-4, U.S. Army Central (Forward), Camp Arifjan, Kuwait. *Army Times* 11/26/2012

## Top Army Reserve CSM gets new job

CSM Michael D. Schultz is moving from the Command Sergeant Major of the Army Reserve, to senior enlisted advisor to the assistant secretary of defense for reserve affairs. He became the 11<sup>th</sup> CSM of the Army Reserve in March 2010. *Army Times*



#### From the President's Desk:

**AWARDS PRESENTED.** At the Annual 84th Division Alumni Steak Fry on Saturday, September 8, 2012, the Association recognized two of its members who have done extraordinary work on its behalf. First, Colonel (retired) John Horter was presented the Association's Life-time Achievement award for his many years of inspiration and leadership. I believe it is fair to say that without John's presence, the Association may never have gotten off the ground and it certainly would not be the organization it is today. Personally, he has been one of my role models for decades and I deeply respect him.

CSM (retired) David Gramins was presented the 2012 President's Award for his outstanding work in several key positions over the years. For many years he was our secretary and most recently, he assumed the duties of Treasurer from Bob Staffaroni, and he has maintained the same level of integrity and professionalism. I know that my predecessor Bill McKeown, counted on Dave as much as I do. Unequivocally, no one works harder for us than Dave, and his efforts are deeply appreciated by all. On behalf of the Board, I again congratulate these two gentlemen for their work in helping this Association accomplish its mission.

**ESGR HELP NEEDED.** The State of Wisconsin's ESGR Team (Employer Support for the Guard and Reserve) headed by Brigadier General (Ret) Bruce Schrimpf is looking for a few good men (and women) to assist with their mission to: 1. Meet and recognize employers who support the troops; 2. Advise the troops on their rights; 3. Work to resolve disputes, and; 4. Help find work for the vets. These are unpaid positions but if you think you want to do something to help our current generation with the growing problem of veteran employment issues, please let me know and I'll get you in contact with BG Schrimpf. Thank you for this consideration.

**CHANGE OF MEMBERSHIP DATES.** Effective immediately, your annual membership in the 84th Division Alumni Association will expire on June 30, 2013, not on December 31, 2012. This change was made to facilitate the processing of memberships and doing so at a less hectic

time of year for the members and the board. So, watch for your renewal notice in May 2013. And please, re-up!

**BUDGET CUTS? WHAT BUDGET CUTS?** There has been a lot of talk about the impending Sequestration, the process that will lead to about one trillion dollars being cut from the Defense Department Budget over the next few years. According to LTG Jeffrey Talley, the Commanding General of the US Army Reserve, he has been told NOT to plan for any such cuts this year. That is correct. None. I am confused and intrigued by his comments so I will watch for more information as the New Year begins and I'll report back to you.

That would be good news for LTG Talley as he intends to focus his energy on his goals of "providing trained and ready troops to meet the needs of the Army." In support of the Army's Force Generation Model, the reserve soldiers will spend four years at home – one year for reset (getting back to normal after an active duty tour) and three in training- and a fifth year available for deployment. General Talley said he will expect the reserve troops to get back to the basics of shooting, moving and communication (you might remember this as "shoot –scoot- and communi-coot"). While he has had no problem recruiting new soldiers, he is short of midcareer soldiers like staff sergeants and captains. To address that problem he will direct his recruiters toward those active duty soldiers who are set to leave the service as a result of the expected cut backs over the next few years.

**ORDER IN THE COURT!** You may have heard of the unusually high number of vets who have had run-ins with the law recently. The volume of these incidents has led some progressive thinking communities across the U.S. to establish special courts. Their task is to review the unique and sensitive problem of returning vets who have problems adjusting to civilian life. In Racine, the new Veteran's Treatment Court is designed to hold vets accountable for criminal acts but with a sensitive ear toward their challenges of substance abuse and mental health issues. I think this is a good idea. As a former law enforcement officer, I would not approve of anyone getting away with violating the law, but these men and women have unique problems and they should be given some special consideration. Let's all hope this works – for them and for us.

**NEW YEARS RESOLUTION.** I intend to thank the 84th Division Alumni Board more often for all their hard work and commitment to making our get togethers possible. They really put in a lot of hours and they do some back breaking



work – just to see their old friends again. The highest compliment you can pay them is to attend these functions. That alone sends the message that you appreciate their efforts. Thanks guys (and gal) for a job well done in 2012.

If you think you still have a little something left in the tank, and you want to help Christians at risk throughout the world, I invite you to join me and a dozen or so other members of the 84th Division Alumni Association in the Sovereign Military Order of the Temple of Jerusalem (SMOTJ), the Knights Templar. No, things are not going well in the world, and yes, every voice counts. Email: [ppochowski@wi.rr.com](mailto:ppochowski@wi.rr.com).

Issy and I and the Board of Directors wish a Merry Christmas, Happy Hanukah, and a Happy Holiday Season to all!

**Skip Pochowski**



**UW BADGERS  
ARE ROSE  
BOWL BOUND!**



### **Congress to decide how Tricare pharmacy fees will rise in 2013**

By Tom Philpott *Star and Stripes*  
Published: November 23, 2012

The House and Senate will decide in the next few weeks how military pharmacy fees will be raised in 2013, a step that arguably will be the most significant taken to date to slow growth in military healthcare budgets.

Out-of-pocket costs for military families and retirees who have prescriptions filled in the Tricare network of retail pharmacies depend on final language in the fiscal 2013 Defense Authorization Act. Congress intends to pass a final defense bill by mid-December.

The House-passed plan for pharmacy fees could win over Senate colleagues during final negotiations on the bill. It already is more palatable with military associations. It calls for more modest co-pay hikes than proposed by the Obama administration. But it would achieve the same first-year savings by requiring beneficiaries 65 and older to use the Tricare mail order pharmacy program for refills of all maintenance drugs, those that control chronic conditions like high blood pressure and diabetes.

### **171,000 Retirees Likely To Lose TRICARE Prime Option**

With the presidential election over, Defense officials are expected to announce soon those military retirees and their dependents living more than 40 miles from a military treatment facility or base closure site will lose access to TRICARE Prime, the military's managed care option.

These beneficiaries would be expected to shift to TRICARE Standard, their fee-for-service insurance option, which would mean an increase in out-of-pocket costs for beneficiaries who are frequent users of health services.

A total of 171,000 retirees and dependents are expected to have to shift coverage when remote Prime networks go away. Tentative plans are for this to occur April 1 in the West Region, which would coincide with UnitedHealth Military and Veterans Services taking over the region's support contract from TriWest Healthcare Alliance after 16 years.

The North and South TRICARE regions are expected to close down Prime service areas beyond 40-mile catchment areas of bases or base closure sites by Oct. 1, 2013, the date when current Prime enrollment periods expire for most beneficiaries. Philpott | November 08, 2012 *AUSA*

### **West Point Chapel hosts 1st same-sex wedding**

The Associated Press

Cadet Chapel, the landmark Gothic church that is a center for spiritual life at the U.S. Military Academy at West Point, hosted its first same-sex wedding Saturday. The way was cleared last year, when New York legalized same-sex marriage and President Barack Obama lifted the "Don't ask, don't tell" policy prohibiting openly gay people from serving in the military.

Army Chaplain Col. J. Wesley Smith performed the ceremony. He is the senior Army chaplain at Dover Air Force Base, where he presides over the solemn ceremonies held when the bodies of soldiers killed in action overseas return to U.S. soil. Last weekend, there was wedding at another campus landmark, the small Old Cadet Chapel in West Point's cemetery. December 1, 2012 *Military Times*



## ADVENTURES IN TRAVEL



Our KC-135 at Hickam AFB, HI



Business Class Seating on KC-135

### **A Space Available Travel Excursion to Hawaii, California and South Carolina**

I regularly monitor 'SpaceA' travel from Milwaukee, Minneapolis, and other locations, such as Scott AFB, IL. In October, a one way flight to Honolulu, HI, was listed on the 128<sup>th</sup> ANG unit out of Milwaukee. I signed us up to go on the flight as soon as I heard the recording, and we were notified the day before that we were selected. (I last flew on one of 128<sup>th</sup> air refueling tankers 25 years ago round trip to Hawaii.) Our goal was to fly to Hawaii, and then onto Tokyo, Japan, where my wife's cousin is a Navy Commander at the Yokosuka Naval Base. On that Wednesday morning, aside from the crew, there were only four of us retirees. The flight typically takes approximately nine hours from Milwaukee to Hickam AFB, HI. The Air National Guard's aircraft was spotless (much cleaner than my car). You can see the pride my old unit exhibits in maintaining their aircraft.

Honolulu International Airport, and Hickam AFB share the same runways. The Hickam air terminal has an Enterprise car rental office just a few steps from the counter. I made an advance reservation, so it was quickly in and out to the car. Under the DOD Joint Basing system, Pearl Harbor runs some of the facilities, such as lodging, on Hickam AFB. I was not able to preregister on line for a room at either Pearl Harbor or Hickam lodging (Navy Gateway Inns and Suites). We attempted walk in registration, but based on availability, we couldn't get a room as space available travelers (\$55/night). Other options are the Hale Koa Armed Forces Rec Center on Waikiki (even if you don't stay there, you can use the facilities), Schofield Barracks (\$120/night), or one of the beach cottages on the island of Oahu.

The last time we were here, we stayed for two nights at the Piliiaau Army Rec Center on the leeward side of Oahu in a one bedroom studio (they have two bedroom units), and the rest of the time at the Hale Koa Military Hotel, with price based on rank and type of accommodations.

I knew that could get a cabana cottage at Kaneohe Marine Corps Base for \$64 per night (the regular lodging is \$132/night, with regular two bedroom beach cottages at \$90/night). If you have a car, you can cross the runway (it's pretty cool to see planes landing right in front of you as you may have to wait for them), and get to the cabanas. The Marine Base is on the windward side of the island, and on a peninsula. The cabanas are on a secluded beach on Kaneohe Bay. You get a refrigerator, microwave, coffee pot, TV, and a sink to wash up. The shower and lavatory facilities are shared, if you don't mind (hey, they're beach cottages). We booked in for two nights, hoping to get lodging at Pearl Harbor, or Hickam.



The beach is behind the trees



There is a trundle bed under the sofa

Just a few miles south of MCBH Kaneohe, is Bellows Air Force Station. Bellows has brand new condos for \$120/night, and 2-3 bedroom beach cottages for \$95/night. Another option is the 'rustic cabins' along the beach. They go for \$30/night, with a double/queen and a bunk bed, but with a catch: they have no electricity, or linens (I priced sheet sets and pillows at Walmart for about \$30). The rustic cabins are near the beach facilities, with a maximum 21 day stay. This beach is one of the best on Oahu, and is just beautiful. The waves are just large enough to body surf. We ate breakfast at the café, located in the main building.

If you are a golf enthusiast (I'm just a caddy), every base on Oahu has at least one golf course. I originally booked a rustic cabin on line for December as a fall back, before the ANG Milwaukee flight popped up, as we were planning on going to Hawaii in December.



'Rustic cabins' at Bellows



You can't beat this beach or the view



A terrific desk clerk at Pearl Harbor NGIS got us five nights at Pearl Harbor. As we were still hoping to get a direct flight to Yokota AB, Japan, this was a big plus. We figured if we didn't get to Japan, we would spend a few more days on Oahu, stop in northern California, before heading home.

Pearl and Hickam are separated by a fence line, with an unmanned gate. This makes it convenient to go back and forth between clubs, lodging, BX/NEX, commissary, the Hickam beach, and the Hickam air terminal. Even though the Hickam flights are on Facebook, I regularly went to the terminal to check and track flights out of Hawaii.

It was a strange feeling to get up early and watch the Greenbay Packers beat the Titans at 7am local, while eating a buffet at the Hickam AFB *JR Rockers* sports bar. Many Air Force Bases have combined casual clubs. The Navy and Marines use the Hickam officer club for special events, with many casual places to dine on both bases, and buffets open to all ranks. As the ships enter Pearl Harbor, they pass right next to the Hickam Officers club and Wright Brothers Café. As you are dining, you might see a missile cruiser, frigate, submarine, or an army cargo ship pass next to you.



Café lunch with a submarine



My wife's reading spot at Hickam beach

You will find the Hickam beach and marina are one of many unique places to relax. With little wave action, you might think of it as a beginner's beach. As the ships enter Pearl Harbor, they cross in front of the beach and marina. To the left of the beach, planes of all sizes and nationalities land and take off on the runway that parallels the lagoon, which is next to the Hickam golf course. Watching a pair of F-22 fighters taxiing and then waiting behind a JAL 747 to take off seems strange, but then you get to see and hear those fighters buzzing around the Hickam and Honolulu areas.

No joy getting a direct flight to Japan, so we decided to work our way home. Sometimes, timing is everything. Enterprise on base was very accommodating by allowing us to extend our car rental one day at a time. Also, by getting another night at the Pearl Harbor Submarine Base, we didn't have to move off base. Late Thursday evening a fully cargo loaded Air Force C-17 Globemaster II took us to Travis

AFB, between San Francisco and Sacramento, arriving in the early morning on a Friday (a five hour flight).

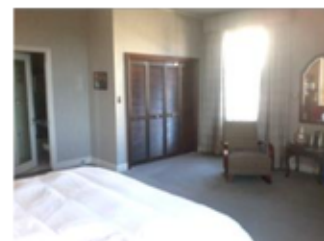
Sometimes you run into lodging issues on bases. By arriving on that particular Friday, we encountered an AF Reserve Drill Weekend, and the place was booked up. The Enterprise car rental kiosk is located in the BX mall, but they picked us up promptly at the air terminal, and we headed down to Monterey Bay for some sightseeing. I booked the car for the weekend two day rate, figuring we could extend the rental, if necessary. Typically I reserve a compact car, using the logic that if they don't have one, you will get upgraded to a larger car. In this case, it worked.

Monterey is approximately 150 miles south of Travis, AFB, and 115 miles south of San Francisco, CA. It hosts the Presidio of Monterey, home to the Defense Language Institute, and the Naval Post Graduate School. Also, it had Fort Ord, which was closed in 1994. Monterey has Canary Row, an aquarium, along with other sites to see and many places to dine.

I called the Monterey Navy Gateway Inns and Suites (NGIS) and booked us for one night in the main building at \$55/night. WOW! This is an historic old hotel, with high ceilings and thick walls. The 'standard room' we were given was *approximately 20'X20'*, with some old admiral's name on the door. The view of the grounds from our room was spectacular.



Great old military hotel



Very nice historic digs

Saturday night brought us back to Travis, AFB (remember, drill weekend?). I used a computer at the terminal to book us off base in Fairfield, CA. It was a good thing, because by the time we got to the motel, it would have been booked up.

Some of the newer Air Force Base clubs are set up with the enlisted on one side, and the officers on the other side. The ballroom can be opened up for events such as the Champagne Sunday Buffet, which we attended. They had the 'wrong' games on the big screens in the ballroom (it was still two hours earlier than central time), so we took our drinks and plates to the enlisted bar side and watched the Packers defeat Arizona.

We went next door to the AF Inn to see about getting a room that night. With drill weekend finally over, they let us check in early. Many of the AF Inns have a business center that guests may use. This place also had monitors that display the SpaceA three day departure schedules (what you can see on the Travis Facebook site). That saves guests the trouble of not having to go to the terminal, or use a computer. After four years with no price increase, as of October 1<sup>st</sup>, the standard AF Inn room now costs \$53.25/night.

Since we chose not to try and get a flight out of Honolulu to the Midwest, such as another KC-135 tanker to Indiana, we were at the mercy of east bound flights from Travis. If you want to fly out of a terminal that day, you have to go to the terminal and be marked present. That makes you eligible for any flight out that day. The only flight to the Midwest for days, left the day before we arrived at Travis. Not wanting go south to fly east, we decided to take a C-5 Galaxy, the largest cargo plane, to Charleston, SC. This is another five hour flight. Again, using the air terminal's computer, I reserved another Enterprise one way rental to Mitchell Field.

In a C-5, you sit upstairs on the flight deck level in airline type seats. There are usually up to 73 seats, but you face backwards; that is okay since you can't see anything anyway. In a C-130, C-17, KC135, or KC-10 you sit alongside of the plane in a fold down seat, or a web seat.

If you are departing a regular Air Force Base, you usually can purchase a box lunch for a longer flight. Prices range from \$4.55, to \$6.00 cash. At Air National Guard (such as Milwaukee) and Air Force Reserve Bases, they normally let you bring your own food and drinks on the aircraft.

Like Hickam AFB, and Honolulu International, Charleston AFB, and Charleston International share the same runways. With a delay in departure, we arrived later than scheduled. Most taxis are not allowed on base, unless the driver is a retiree, or has authorization. For \$20, the driver took the two of us, plus a family to the rental counters at main airport on the other side of the field. By 11:45 eastern time, we were out of the rental counter, with my compact car upgraded to the next size, and we were on the road.

My wife's iphone found us a motel north of Columbia, SC (Ft. Jackson). We grabbed a few hours' sleep and got back on the road to Milwaukee. I am not a big fan of driving on any mountain roads, but have driven this route before, and the Smoky Mountains are not the Rockies.

Late Tuesday evening found us back at the Milwaukee Air National Guard Base, which has a 24 hour guarded gate. We picked up the SUV and headed to the car rental turn in on the other side of the airport. We finally arrived home in time to watch the end of the November election results.

Long before we left on our trip, I planned for many contingencies. That said, I hadn't planned on flying to South Carolina. Should you choose to fly SpaceA, look at making alternative arrangements for transportation and lodging. You may end up purchasing a one way air fare to get home, but hopefully not. Without cost, you can register for membership at Hertz, Enterprise or other car rental agencies. With a membership number, you have access to locations that may not normally show up, such as on AF bases. Some metro transportation systems may link to bases, one example is Scott AFB, IL, to St. Louis, MO. Amtrak can link you up from major cities, to include bus transit. Another site I recently discovered is called [megabus.com](http://megabus.com), with many routes, and less expensive than Greyhound Bus. And since you saved on air fare, you can afford to spring for a taxi to get to the rental location.

Where ever you go, have fun and remain safe. As I thanked the Tech Sgt at the Milwaukee terminal he said, please keep using SpaceA travel, he wants it there when he retires.  
World Traveler Jerry

---

### Select Navy Lodges Offering Greater Savings This Holiday Season

Select Navy Lodges will be offering even greater savings this holiday season. From December 3, 2012 – January 7, 2013, guests who stay at select Navy Lodges will receive 20 percent off their lodging. Guests can book their lodging now through January 2, 2013. This discount is only through: [www.navy-lodge.com](http://www.navy-lodge.com)

Navy Lodges participating in the holiday promotion include Navy Lodge Patuxent River, Annapolis and Bethesda, MD; Navy Lodge Fort Worth and Corpus Christi, TX; Navy Lodge and Navy Inn Memphis, TN; Navy Lodge Mayport, FL; Navy Lodge Kings Bay, GA; Navy Lodge New London, CT.; Navy Lodge Washington, DC; Navy Lodge Everett, WA; Navy Lodge Moffett Field, CA; Staten Island, NY; and Navy Lodge Great Lakes, IL.



Navy Lodge at Moffett Field, CA



Navy Lodge at Newport, RI



## New Fees on Cruises

### **Ships are hitting passengers with a la carte charges.**

When it comes to cruise vacations, the term all-inclusive should come with a big, fat asterisk. Cruise lines are taking a cue from airlines, adding or increasing fees to keep base fares low while still boosting revenue. "In this day of such easy and pervasive price comparisons, it's important to have the lowest price out there," says Ed Perkins, an editor with SmarterTravel.com. "If they can't charge more for their basic product, cruise lines have got to make it some other way."

Many of the new fees target food -- specifically gourmet items, such as lobster, steak, premium coffees and fancy desserts. Carnival recently beefed up the entrance fee for its steakhouse from \$30 to \$35 per visit. Royal Caribbean raised the price of entry into its Chops Grille restaurant from \$25 to \$30.

Once imposed, fees tend to stay. "When the economy starts to recover and fares go up, you won't see cruise lines dropping these fees," says Carolyn Spencer Brown, of [CruiseCritic.com](http://CruiseCritic.com). The good news for cruisers is that these charges are typically optional. And so far, the fees are limited to big cruise lines, such as Carnival and Celebrity.

But pesky fees make it tougher to budget for your cruise vacation, especially if you're caught off guard by a new charge or give in to an impulse purchase. And sometimes the fees aren't transparent, says Brown, citing the example of a waiter handing out flutes of champagne at dinner without letting diners know that they cost \$20 each.

Unlike airlines, which must follow fee disclosure rules, cruise lines aren't regulated as to how they display extra charges. To better estimate what your next cruise will cost, go to Independent Traveler's budget calculator. It provides a worksheet with boxes for typical cruise fees, including dining surcharges, cocktails and soft drinks.

*This article first appeared in Kiplinger's Personal Finance magazine.*

## How Will The Fiscal Cliff Affect Your Taxes? Here's A Calculator That Tells You.

Roberton Williams, Contributor

As a lame-duck Congress once again faces an impending deadline for dealing with expiring tax cuts, the Tax Policy Center has released a new Tax Calculator to compare potential outcomes. We obviously don't know what the

outcome of negotiations between Congress and the White House will be.

To make things easy, you can look at ready-made examples or create your own case. To see the effect of capping or eliminating itemized deductions, for example, you can start with one of the example taxpayers and reduce or zero out the input values for some or all of their deductions.

Check out our new calculator and see how the different tax plans would affect real families.

<http://calculator.taxpolicycenter.org/index.cfm>

(Note: You may wish to evaluate whether or not to make use of the current capital gain tax rate in 2012.)

## Make good money? Live in a high-tax state? Have a lot of dependents? The Alternative Minimum Tax could raise your tax bill. See if you'll pay it.

The Alternative Minimum Tax is a parallel system developed more than 40 years ago by Congress to make sure the wealthy paid at least some income tax. But because the AMT was never indexed for inflation, it increasingly ensnares many middle-class Americans. Knowing whether you're likely to be snagged by the AMT can help guide your year-end tax planning.

[http://www.kiplinger.com/tools/AMT\\_Calculator/index.php](http://www.kiplinger.com/tools/AMT_Calculator/index.php)

## Army Suicide Numbers Rise in October

There were as many as 20 suicides among active-duty soldiers in October, five more than the month before, the Army announced November 15. Of the October deaths, five have been confirmed as suicides, and 15 are still under investigation. So far this year, there have been 166 suspected active-duty suicides. Of those, 105 have been confirmed, and 61 are still under investigation.

Also in October, there were as many as 13 suicides among reserve component soldiers. Nine were from the Army National Guard and four were from the Army Reserves. Three have been confirmed as suicides, and 10 are under investigation. November 26, 2012 *Army Times*



## **84th Division Alumni Association, LTD**

P.O. Box 51

Slinger, WI 53086-0051

Phone: 262.617.1534

Email: [alum84news@yahoo.com](mailto:alum84news@yahoo.com)

Please support:

*Stenz-Griesell-Smith American Legion Post 449*

*3245 North 124th Street*

*Brookfield, WI 53005*

*Home of the 84th Alumni Association*



### **BOARD OF DIRECTORS**

COL (Ret) Peter (Skip) Pochowski, President

COL (Ret) Dean Orley, VP Events/Activities

CW3 (Ret) Gerald Wold, VP Communications

CSM (Ret) Dave Gramins, Treasurer

SFC (Ret) Bill Krieger, Secretary

COL (Ret) Bill McKeown, Past President

CSM (Ret) Clarence Brunner

COL (Ret) Patrick DuChateau

LTC (Ret) Lori Kunstman

SFC (Ret) Pete Schiller

SFC (Ret) Jack Woller

Mr. Ted Jendusa, CXO 84th Tng Cmd

### **BOARD ADVISORS**

MG (Ret) Michael Berzowski, Legal Advisor

COL (Ret) John Horter, Senior Advisor